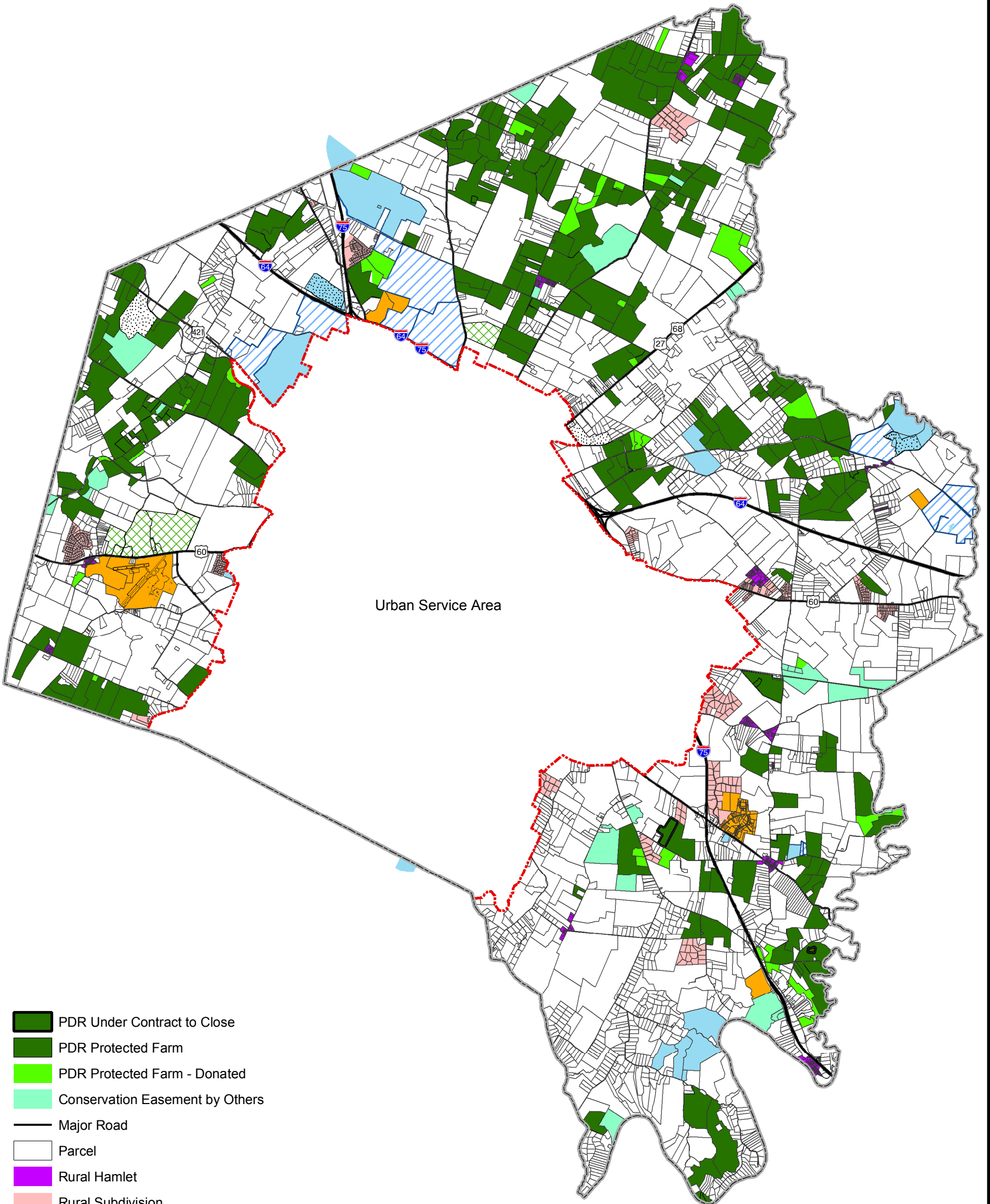


PDR Protected Farms, Accepted Offers, Other Protected Farms, and Other Public Lands

25,424 acres of preserved farmland now protected by PDR
 50,000 acres of farmland is the goal of PDR.

Lexington-Fayette County, Kentucky



Urban Service Area

-  PDR Under Contract to Close
-  PDR Protected Farm
-  PDR Protected Farm - Donated
-  Conservation Easement by Others
-  Major Road
-  Parcel
-  Rural Hamlet
-  Rural Subdivision
-  Industrial / Airport
-  Park
-  Public Land
-  Keeneland/ Fasig-Tipton Property
-  Golf Course
-  Urban Service Area Boundary
-  County Boundary

This product is produced and distributed by:
 Lexington-Fayette Urban County Government
 GIS Section 200 E. Main St. 7th Floor
 Lexington, KY 40507. Not for resale.

All information on this product is believed accurate but is not guaranteed without error. No part of this publication may be reproduced, stored, or transmitted in any form or by any means without written permission from LFUCG.

© 2011 LFUCG



Revision Date: 5-12-2011